

RESULTS FROM THE DECEMBER 2022 AUTOMATIC TRAFFIC COUNTS REQUESTED BY ESSEX HIGHWAYS

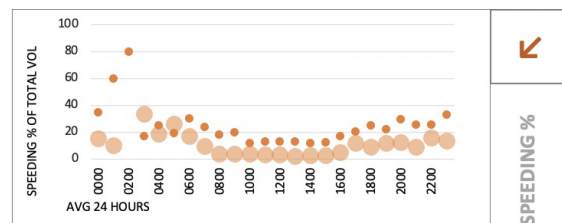
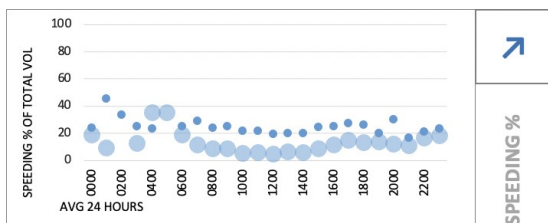
FULL DETAILS AVAILABLE ON THE DPC WEBSITE

Please see below the results from the most recent ATCs. They should be examined in relation to the earlier counts on the main access points to the village taken in October 2022

- I have not included Stratford Rd-below as the speed limit is 60 mph so not surprisingly there were no recorded speeders there. Whether 60 mph is appropriate or not is another discussion to be had with Essex Highways
- I believe the most important figures are those below that show the percentage of vehicles speeding. We are all aware that statistically we are far less likely to be killed if hit at 30 mph and the risk increases exponentially as speed increases.
- Total volume of traffic in the High Street was 14,904
- Total volume of traffic in Brook street was 15,843
- Total volume of traffic in Dedham was 18,430
- By looking at the graphs below and in particular the larger paler dots that show vehicles travelling at 36 mph and above that is a huge number of cars with the potential to kill you!
- A better statistician than me could work out an exact figure!

High Street

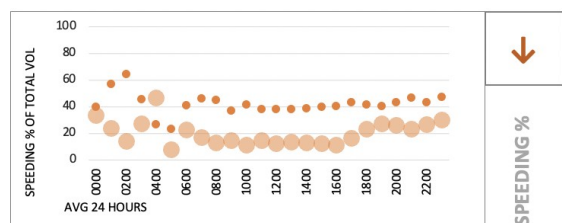
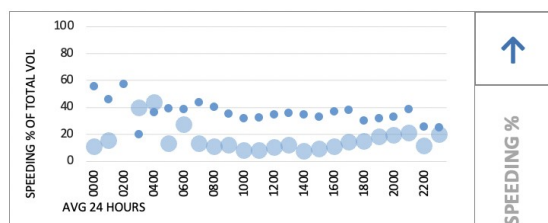
SPEEDING % EXCEEDING 30mph



7-day average percentages of vehicles exceeding the posted speed limit each hour. The small, darker dots represent the percentage travelling between 30 and 35mph, whilst the larger markers represent those at 36mph and above. A high proportion of larger dots may indicate a potential speeding issue.

Brook Street

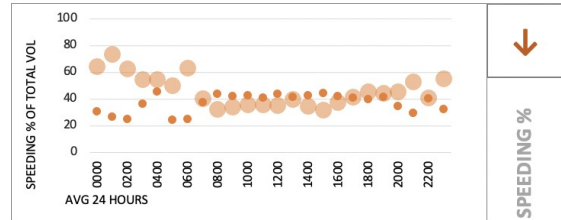
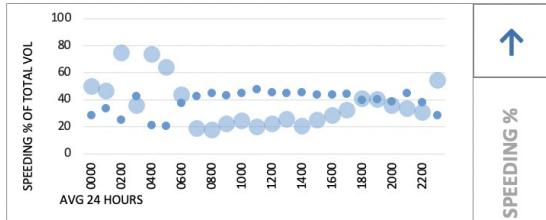
SPEEDING % EXCEEDING 30mph



7-day average percentages of vehicles exceeding the posted speed limit each hour. The small, darker dots represent the percentage travelling between 30 and 35mph, whilst the larger markers represent those at 36mph and above. A high proportion of larger dots may indicate a potential speeding issue.

B1029 Dedham Road

SPEEDING % EXCEEDING 30mph



7-day average percentages of vehicles exceeding the posted speed limit each hour. The small, darker dots represent the percentage travelling between 30 and 35mph, whilst the larger markers represent those at 36mph and above. A high proportion of larger dots may indicate a potential speeding issue.

It is clear that looking all the data collected in the last four months that dedham has a major issue with speeding vehicles

I look forward to meeting with an engineer from Essex highways and Cllr. Lewis barber to examine exactly how we can implement an integrated traffic management system that addresses traffic issues throughout the whole village